



General catalog

FA RR HOLLAND

A member of



**A new and more efficient solution
to replace your belt or chain drives**



Floor drive tech

RT 45



Code	Hole	Key	Input shaft	Weight kg.	Ratio	Output torque N m
	E8	E8				
9247	30	8	ø 25	11	1.9:1	450
9233	35	10				
9232	1 3/8" Z6					

RT 50



Code	Hole	Key	Input shaft	Weight	Ratio	Output torque
	E8	E8		kg.		N m
15844	30	8	ø 25	11	1.9:1	500
15845	35	10				
15846	1 3/8" Z6					
15847	30	8	ø 32			
15848	35	10				
15849	1 3/8" Z6					

RT 90



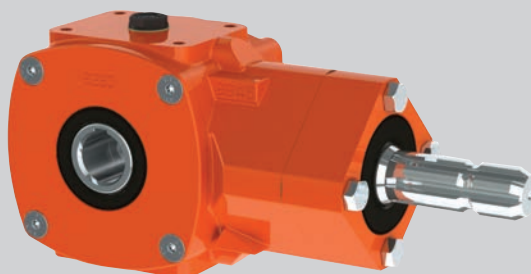
Code	Hole	Key	Input shaft	Weight kg.	Ratio	Output torque N m
	E8	E8				
9257	30	8	ø 25	12	3.1:1	900
9258	35	10				
9260	1 3/8" Z6					

RT 90-EC



Code	Hole	Key	Input shaft	Weight	Ratio	Output torque
	E8	E8		kg.		N m
13694	30	8	ø 25	13	3.1:1	900
13695	35	10				
13696	1 3/8" Z6					
13697	30	8	ø 32			
13475	35	10				
13698	1 3/8" Z6					

RT 90-EC + PDF



Code	Hole	Key	Input shaft	Weight	Ratio	Output torque
	E8	E8		kg.		N m
16792	30	8	ø 1 3/8" Z6	17	3.1:1	900
16793	35	10				
16794	1 3/8" Z6					

RT 100



Code	Hole	Key	Input shaft	Weight kg.	Ratio	Output torque N m
	E8	E8				
15683	35	10	ø 25	14	3.1:1	1000
15542	40	12				
15684	35	10	ø 32			
15531	40	12				

RT 100 + PDF



Code	Hole	Key	Input shaft	Weight	Ratio	Output torque
	E8	E8		kg.		N m
17675	35	10	ø 1 3/8" Z6	18	3.1:1	1000
17676	40	12				

RT 110



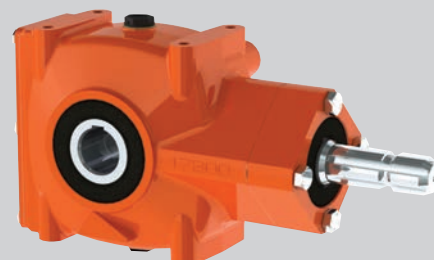
Code	Hole	Key	Input shaft	Weight	Ratio	Output torque
	E8	E8		kg.		N m
18697	35	10	ø 25	15	3,1:1	1000
18214	40	12				
18698	35	10	ø 32			
18215	40	12				

RT 120



Code	Hole	Key	Input shaft	Weight	Ratio	Output torque
	E8	E8		kg.		N m
13106	35	10	ø 25	19	4.1:1	1200
13039	40	12				
16686	1 3/8" Z6					

RT 120 + PDF



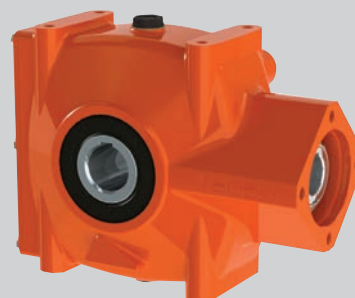
Code	Hole	Key	Input shaft	Weight	Ratio	Output torque
	E8	E8		kg.		N m
16805	35	10	ø 1 3/8" Z6	22	4.1:1	1200
16806	40	12				
16807	1 3/8" Z6					

RT 130



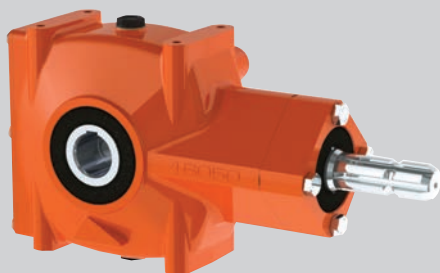
Code	Hole	Key	Input shaft	Weight	Ratio	Output torque
	E8	E8		kg.		N m
18601	35	10	ø 25	20	4,1:1	1300
18602	40	12				
18603	35	10	ø 32			
18604	40	12				

RT 145



Code	Hole	Key	Input shaft	Weight	Ratio	Output torque
	E8	E8		kg.		N m
15996	35	10	ø 25	21	4.1:1	1400
15997	40	12				
15998	35	10	ø 32			
15999	40	12				

RT 145 + PDF



Code	Hole	Key	Input shaft	Weight	Ratio	Output torque
	E8	E8		kg.		N m
17678	35	10	ø 1 3/8" Z6	25	4.1:1	1400
17679	40	12				

RT 150



Code	Hole	Key	Input shaft	Weight	Ratio	Output torque
	E8	E8		kg.		N m
8839	35	10	ø 25	20	12:1	1500
8840	40	12				

RT 160



Code	Hole	Key	Input shaft	Weight	Ratio	Output torque
	E8	E8		kg.		N m
8977	35	10	ø 25	22	8.4:1	1500
8978	40	12				

RT 190



Code	Hole	Key	Input shaft	Weight	Ratio	Output torque
	E8	E8		kg.		N m
10323	35	10	ø 25	28	10.2:1	1900
10324	40	12				
10325	45	12				

RT 200



Code	Hole	Key	Input shaft	Weight	Ratio	Output torque
	E8	E8		kg.		N m
9356	35	10	ø 25	27	16.4:1	2000
9357	40	12				
9358	45	12				

RT 210



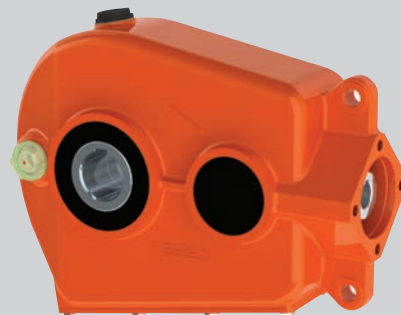
Code	Hole	Key	Input shaft	Weight	Ratio	Output torque
	E8	E8		kg.		N m
17245	35	10	ø 25	27	16.4:1	2000
17246	40	12				
17247	45	12				

RT 250



Code	Hole	Key	Input shaft	Weight kg.	Ratio	Output torque N m
	E8	E8				
14883	40	12	ø 25	34	21.1:1	2600
14884	45	12				
14885	50	14				

RT 260



Code	Hole	Key	Input shaft	Weight kg.	Ratio	Output torque N m
	E8	E8				
16821	40	12	ø 25	36	21.1:1	2600
16822	45	12				
16823	50	14				

RT 300



Code	Hole	Key	Input shaft	Weight kg.	Ratio	Output torque N m
	E8	E8				
8900	35	10	ø 25	34	29.5:1	3000
8640	40	12				
8670	45	12				

RT 320



Code	Hole	Key	Input shaft	Weight kg.	Ratio	Output torque N m
	E8	E8				
16661	35	10	ø 25	33	29,5:1	3000
16662	40	12				
16663	45	12				

RT 350



Code	Hole	Key	Input shaft	Weight kg.	Ratio	Output torque N m
	E8	E8				
10318	40	12	ø 25	39	31.4:1	3500
10319	45	12				
10320	50	14				

RT 350 I



Code	Hole	Key	Input shaft	Weight kg.	Ratio	Output torque N m
	E8	E8				
17401	40	12	ø 25	38	31.4:1	3500
17402	45	12				
17403	50	14				

RT 360



Code	Hole	Key	Input shaft	Weight kg.	Ratio	Output torque N m
	E8	E8				
17995	40	12	ø 25	38	31.4:1	3500
17996	45	12				
17997	50	14				

RT 360 + PDF



Code	Hole	Key	Input shaft	Weight kg.	Ratio	Output torque N m
	E8	E8				
18005	40	12	ø 1 3/8" Z6	41	31.4:1	3500
18006	45	12				
18007	50	14				

RT 400



Code	Hole	Key	Input shaft	Weight kg.	Ratio	Output torque N m
	E8	E8				
9160	45	12	ø 25	44	35.2:1	3900
9161	50	14				
9162	55	16				

RT 400 2V



Code	Hole	Key	Input shaft	Weight kg.	Ratio	Output torque N m
	E8	E8				
9220	45	12	ø 25	55	1) 35.2:1	3900
9221	50	14			2) 17.8:1	
9222	55	16				

RT 420



Code	Hole	Key	Input shaft	Weight kg.	Ratio	Output torque N m
	E8	E8				
15801	45	12	ø 25	43.4	35.2:1	4000
15802	50	14				
15803	55	16				

RT 430 B



Code	Hole	Key	Input shaft	Weight kg.	Ratio	Output torque N m
	E8	E8				
16052	45	12	ø 32	53	10,9:1	4300
16053	50	14				
16054	55	16				

RT 500



Code	Hole	Key	Input shaft	Weight kg.	Ratio	Output torque N m
	E8	E8	ø 25	53	43.6:1	5000
8981	50	14				
8982	55	16				
9063	60	18				

RT 500 + PDF



Code	Hole	Key	Input shaft	Weight kg.	Ratio	Output torque N m
	E8	E8	ø 1 3/8" Z6	56	43.6:1	5000
10408	50	14				
16809	55	16				
16810	60	18				

RT 520



Code	Hole	Key	Input shaft	Weight kg.	Ratio	Output torque N m
	E8	E8	ø 25	53	43.6:1	5000
16001	50	14				
16002	55	16				
16003	60	18				

RT 650



Code	Hole	Key	Input shaft	Weight kg.	Ratio	Output torque N m
	E8	E8	ø 25	67	37.8:1	6400
15376	55	16				
15377	60	18				
15378	65	18				
			ø 32			
15379	55	16				
15380	60	18				
15381	65	18				

RT 800



Code	Hole	Key	Input shaft	Weight kg.	Ratio	Output torque N m
	E8	E8	ø 25	79	31.7:1	8000
9479	55	16				
9470	60	18				
9480	65	18				
			ø 32			
9481	55	16				
9482	60	18				
9483	65	18				

RT 1000



Code	Hole	Key	Input shaft	Weight kg.	Ratio	Output torque N m
	E8	E8	ø 25	97	38.7:1	9700
13438	60	18				
13439	65	18				
13440	70	20				
			ø 32			
13441	60	18				
13442	65	18				
13443	70	20				

Possible application:

Manure spreader, salt spreader, turf and lime spreader, combine, sugar beet and potatoes harvester, concrete mixer, straw blower, different conveyors.

Advantages, benefits and features:

- Overall compact dimensions
- Increases hydraulic motor torque
- Fits most apron and conveyor drives applications
- Multiple ratios to choose from
- Various hydraulic motor inputs
- Metric & sae output and input shafts options
- Shaft mounted or flange mounted options
- Pto male input shafts options

Do not hesitate to contact us for customized or special design products.
We would be available to review your specific needs, provide the best solution that fits your application and strive to exceed your expectations!



RR HOLLAND

A member of



RR HOLLAND

Energieweg 34 - 4906 CG Oosterhout

E-mail: sales@rrholland.nl

Telefoon +31(0)162 45 63 97